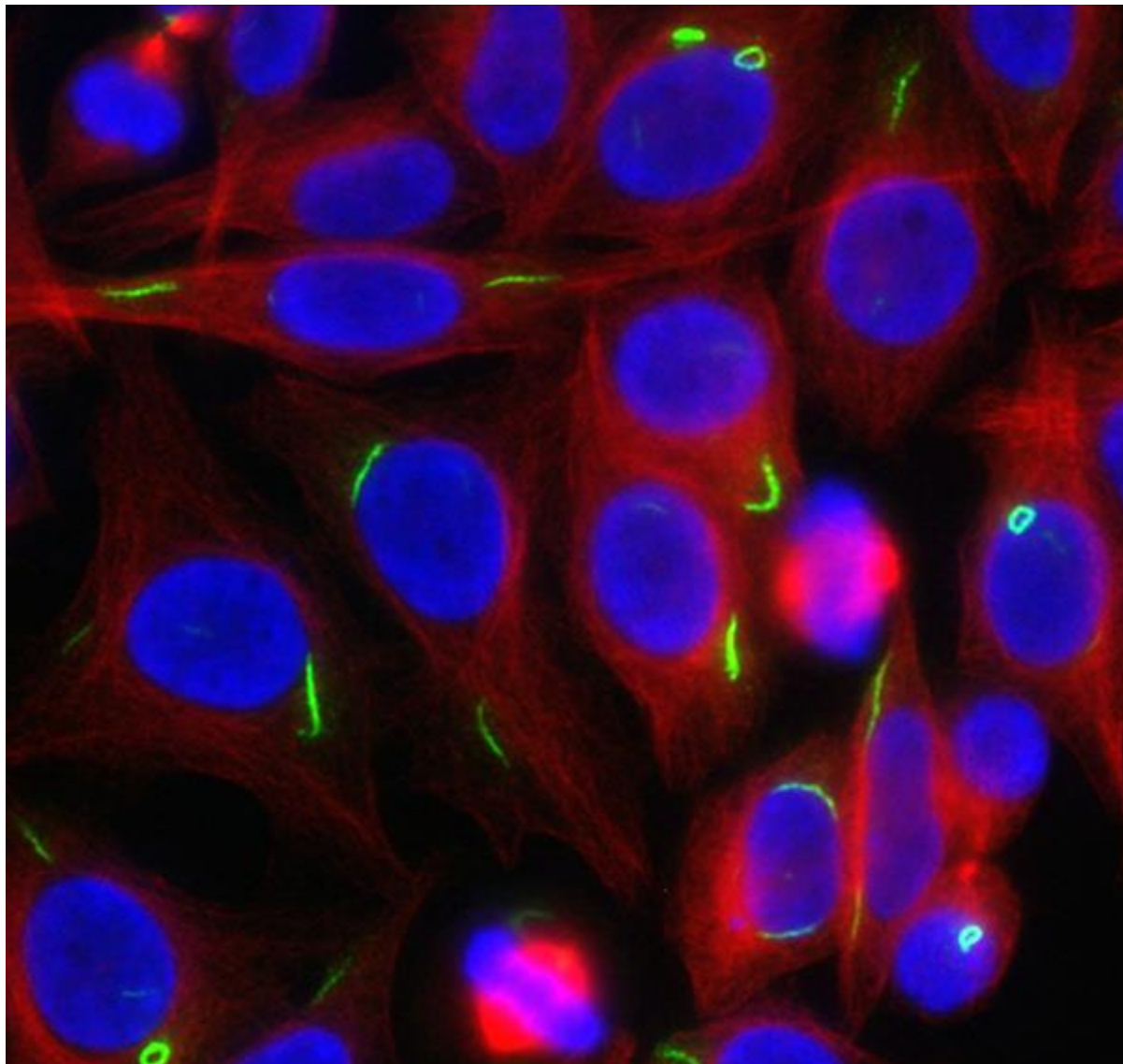


Intracellular rod/ring structures regulated by the one-carbon metabolic pathway

Intracellular 'rod and ring' structures assemble when purine biosynthesis is disturbed, and are composed of inosine 5'-monophosphate dehydrogenase, the rate-limiting enzyme in de novo GMP biosynthesis. These structures were first identified by autoantibodies most often detected in hepatitis C patients after treatment with interferon- α /ribavirin.



- Calise, S.J., W.C. Carcamo, C. Krueger, J.D. Yin, D.L. Purich, and E.K.L. Chan. 2014. Glutamine deprivation initiates reversible assembly of mammalian rods and rings. *Cell Mol Life Sci.* 71:2963-73.
- Calise, S.J., G.D. Keppeke, L.E. Andrade, and E.K.L. Chan. 2015. Anti-rods/rings: a human model of drug-induced autoantibody generation. *Front Immunol.* 6:41.
- Calise, S.J., D.L. Purich, T. Nguyen, D.A. Saleem, C. Krueger, J.D. Yin, and E.K.L. Chan. 2016. 'Rod and ring' formation from IMP dehydrogenase is regulated through the one-carbon metabolic pathway. *J Cell Sci.* 129:3042-52.